



Central Monitoring System



X2 Series

Authentic Instrument Industries Ltd.

(Formerly known as Authentic Instrument & Automation Pvt. Ltd.)

Profile

We, **Authentic Instrument & Automation (P) Ltd.** got established in the year 1996. Since the inception, we have been involved in manufacturing Industrial Lab / Research Lab Equipments. Our major role is setting new benchmarks in the field of Blood Bank Equipment. We are counted among the leading manufacturers, exporters, suppliers and service providers of this domain.

We have Rajasthan's biggest scope of NABL accredited calibration laboratory which is utilized for calibrating almost any industrial & medical equipment. We also have testing lab facility of each and every parameter for conformation of **DQ, IQ, OQ, PQ and MQ** of all the medical electrical equipments.

We had also registered in NSIC, SSI (District Industries Centre) of Rajasthan. Our company certified with ISO 9001:2015, ISO 13485:2016 and CE European Conformity.

Innovation and Quality

Since 1996, we have been synonymous with high-quality products fulfilling the most stringent standards and providing the highest reliability. Since then we have won over your trust through consistent innovation, quality and service.

Temperature stability and reliable temperature monitoring & recording.

Our policy of manufacturing our own housing enables us to optimally coordinate all components of our refrigerator and freezers. This is why we have become a world leader in temperature stability, which can be confirmed by numerous validations at customer premises. The reason is that we only manufacture products that are proven to fulfill the most stringent requirements.

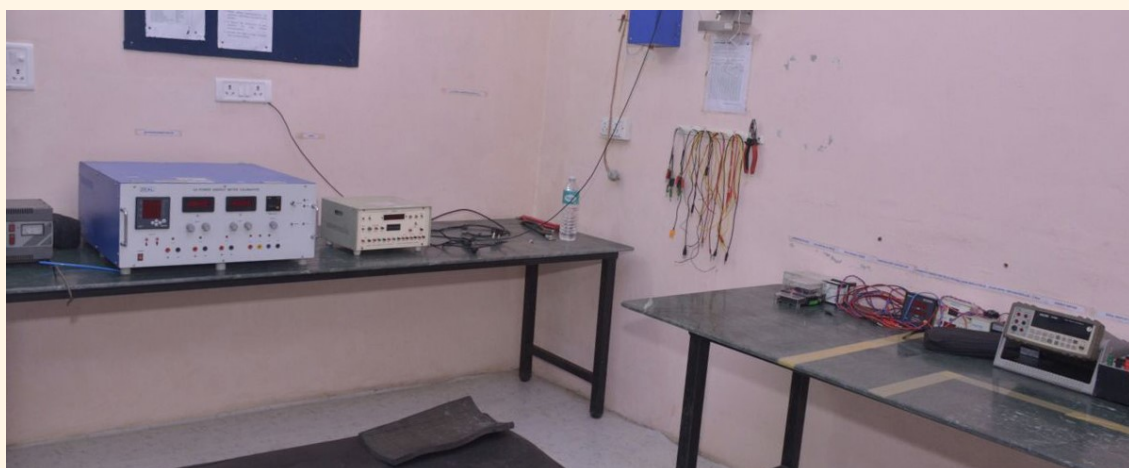
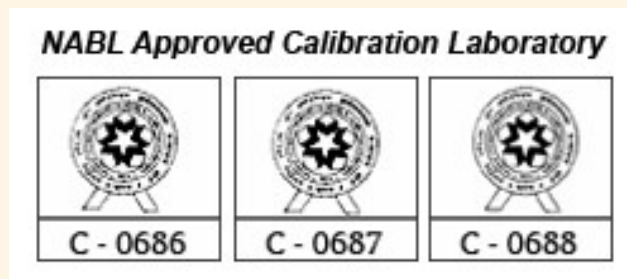
We have continuously developed the most reliable and accurate temperature monitoring and recording system. First time in the world, we had developed smart chart controller and recording system.



Quality:

Quality systems existing at Authentic Instruments comply with the requirement of International standard systems. To achieve the objectives of the quality policy, company plans to implement & achieve Total Quality Management. Quality checks have been Introduced at various work centers of the company under the guidance & expertise of Certified Quality Management Consultants. Persistent follow up by management, internal/external audits and relentless efforts on the part of employees have paid rich dividends. Working in accordance with quality systems has now become a way of life at "**Authentic**".

- NABL Accredited Calibration Lab facility and test lab facility for quality control measures.
- 24x7 customer care services.
- Specialized, continuously trained expert staff.
- Service centre available in major city of India.
- Qualified service engineers team.
- Well equipped and systematic quality control system.
- All the equipments compliance with specific electrical safety requirement with IEC 60601.



Central Monitoring System

Features

- **Designed for monitoring 16 equipment at one place.**

Wireless Central Monitoring System specially designed for 16 equipments based on industrial computer for 24x7 monitoring. Centralized receiving station equipped with temperature weekly circular graphical display and data storage with email facility on specified recipient.

- **Uploading of data on cloud storage or specified email**

Storage of previous 2 weeks independent circular temperature graph with current weeks. **It will automatically send data on specified e-mail recipient every weekend and you can send data manually anytime.** The data will be stored in both graphical form and in numerical data form in excel sheet. And it can further used for various type of statistical analysis.

Specifications

General

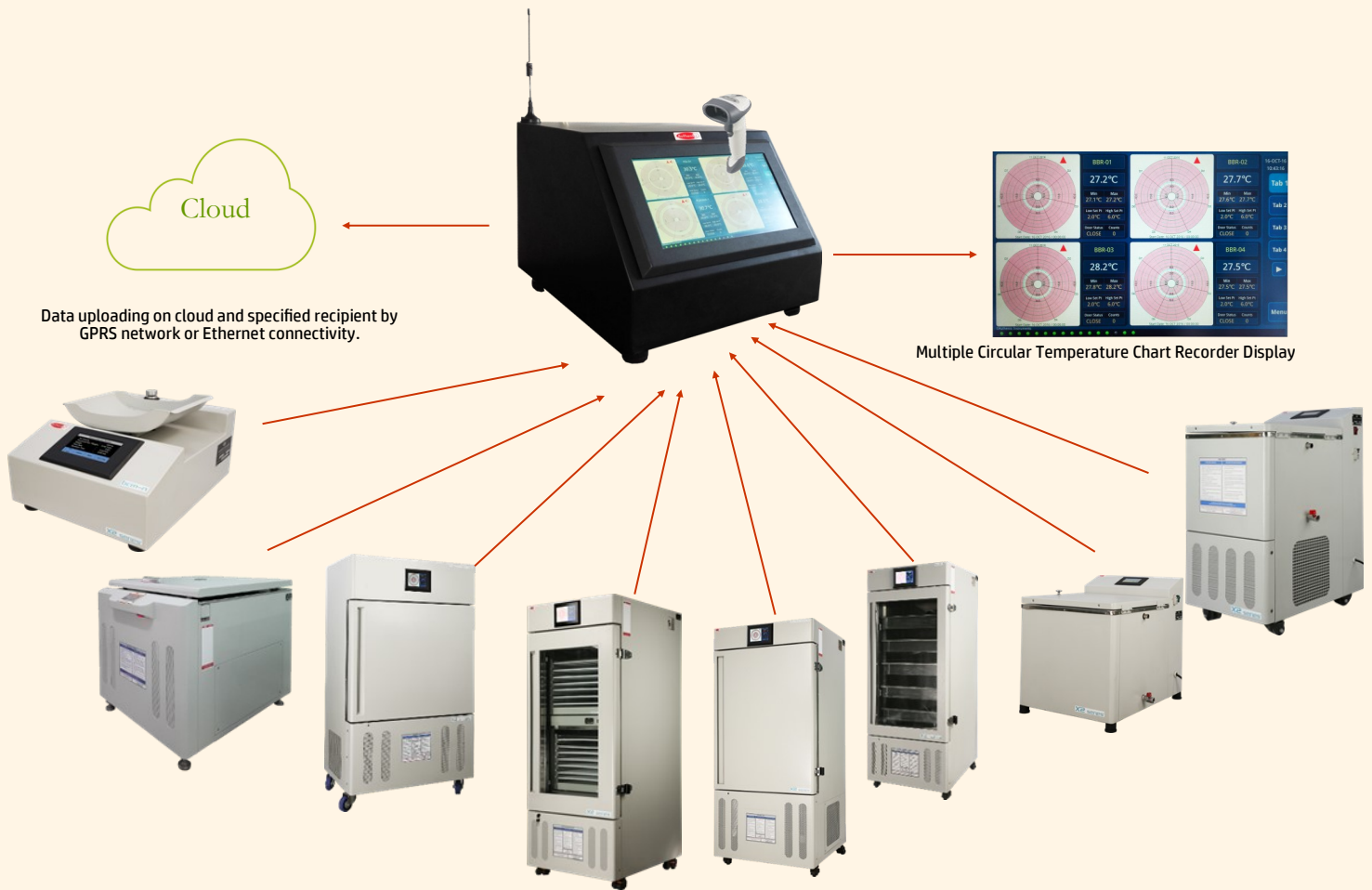
- **BIOS** AMI 8Mbit
- **Cooling System** Fan less design
- **Dimensions (W x H x D)** 287.0 x 227.0 x 73.3 mm (11.30" x 8.94 x 2.89)
- **Enclosure Front bezel:** Die-cast Aluminum alloy
Back housing: PC/ABS Resin
- **Mounting** Desktop, Wall or Panel Mount
- **OS Support** Microsoft® Windows 7/WES7/WES 2009/XPE
- **Power Consumption** 17W
- **Power Input** 10~29 VDC
- **Watchdog Timer** 1 ~ 255 sec (system)
- **Weight (Net)** TPC-1071H: 3.5 kg (7.72 lbs)

System Hardware

- **CPU** Intel® Atom™ D525 1.8 GHz with 1MB cache
- **Chipset** ICH8M
- **Memory** 8GB SO-DIMM DDR3 SDRAM
- **LAN** 10/100/1000Base-T x 2
- **I/O** RS-232 x 2 (COM1, 2) with isolation
RS-422/485 x 1 (COM3) with isolation and auto data flow control
USB 2.0 x 2 (Host) PS/2 x 1



The Transmitter which will be installed in each equipment whose data is to be shown in the Central Monitoring System.



11. Asset tracking device system for temperature sensitive products

Designed for monitoring cold chain equipments at one place to other places, wirelessly.

- Automatically e-mails the digital weekly temperature circular chart at every weekend/hrs at 3 different e-mail IDs. SMS alert at every high- low and power failure and many more feature.
- Location track and mail automatic
- Power and battery operated 30 day capacity.



For more details please visit : www.authenticjaipur.com

Various Screenshots of available Functions



Chart monitoring screens for 16 different equipments - one at a time

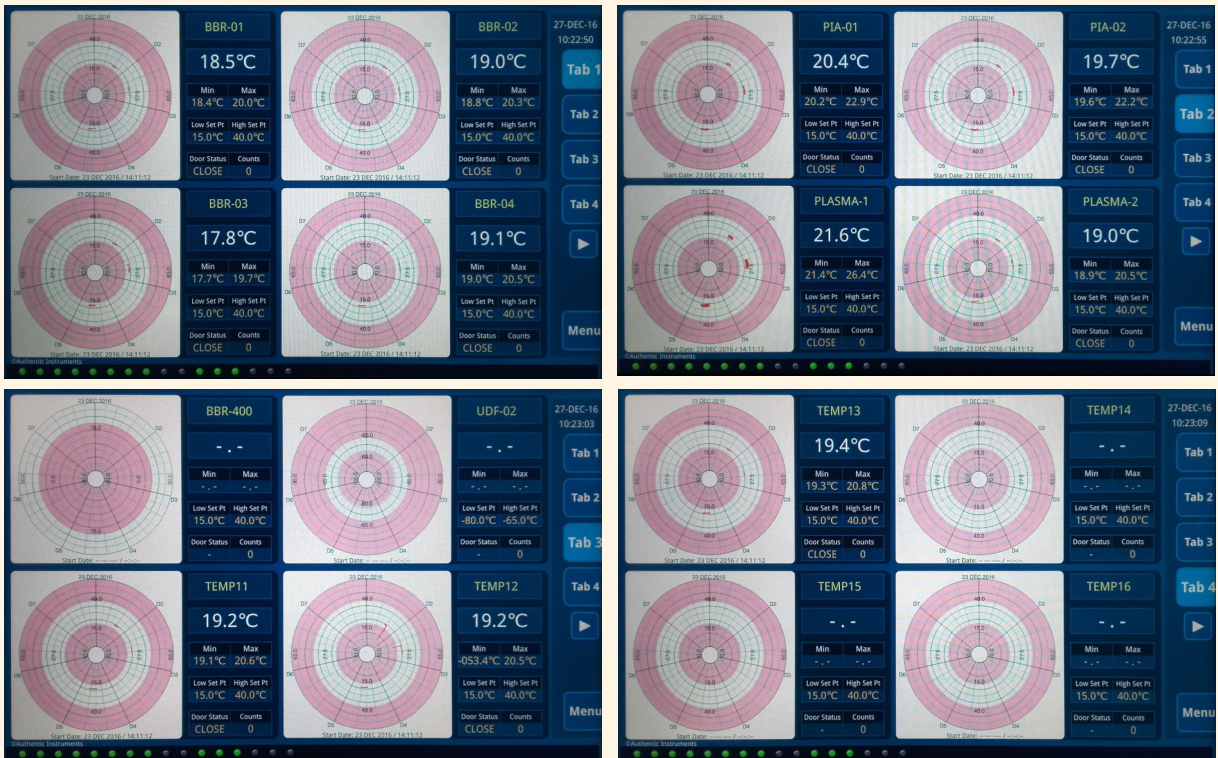
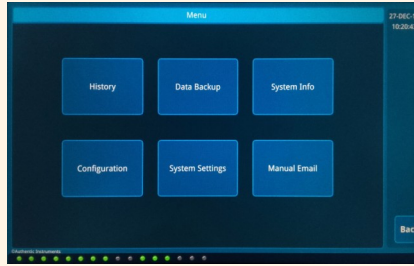


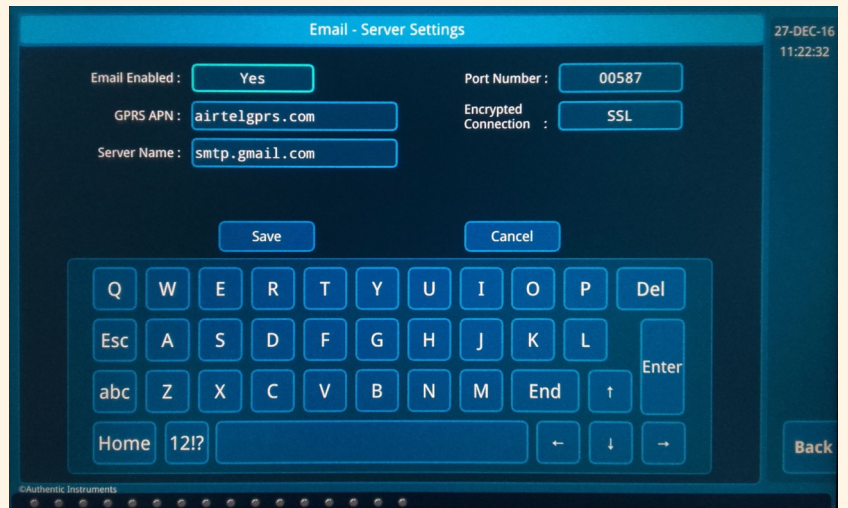
Chart monitoring screens for 16 different equipments - four at a time



Menu



Past three weeks chart storage for each equipment in History

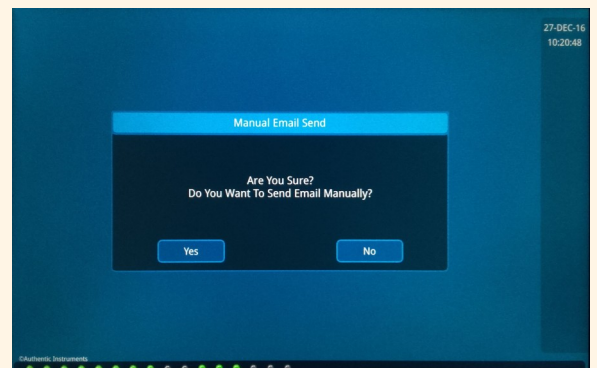


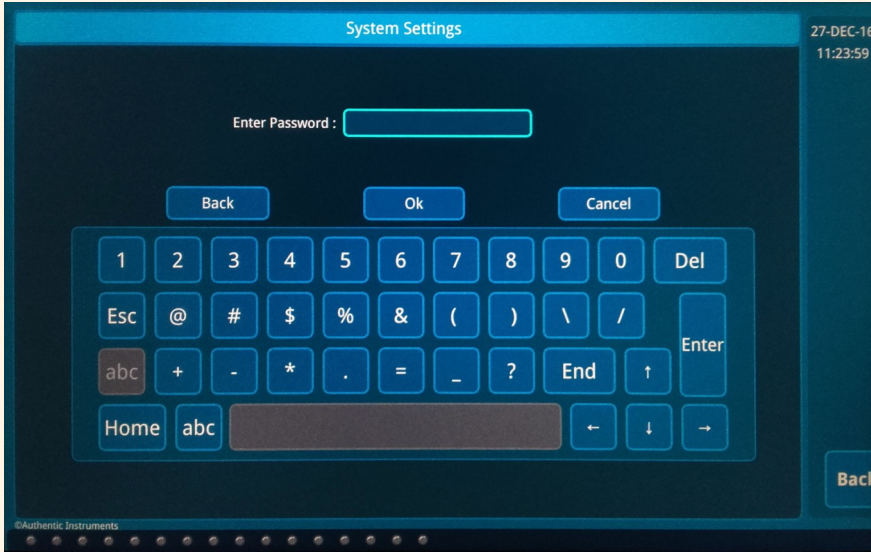
Server Settings for sending the e-mail



Sender settings - to setup the sending e-mail ID and enter upto 3 e-mail recipients who will receive the e-mail with weekly chart recordings of each equipment at every weekend.

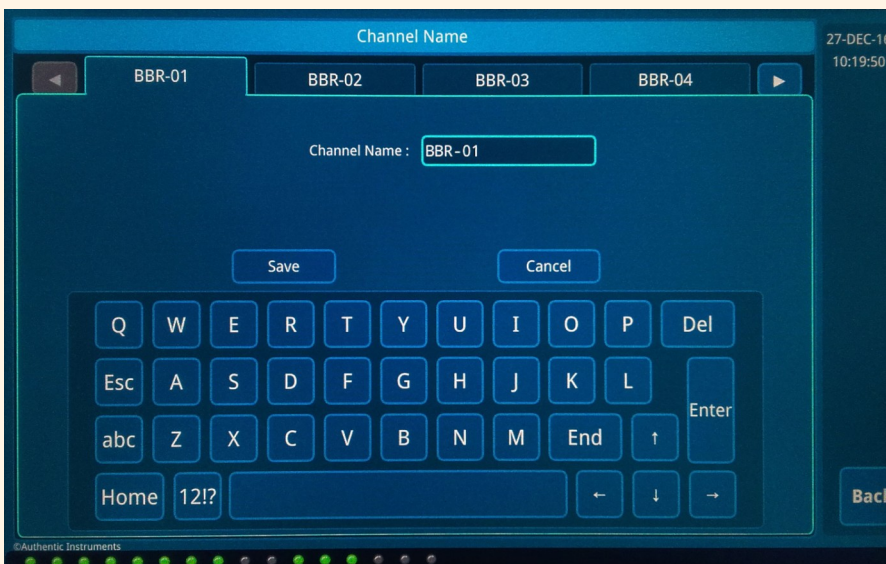
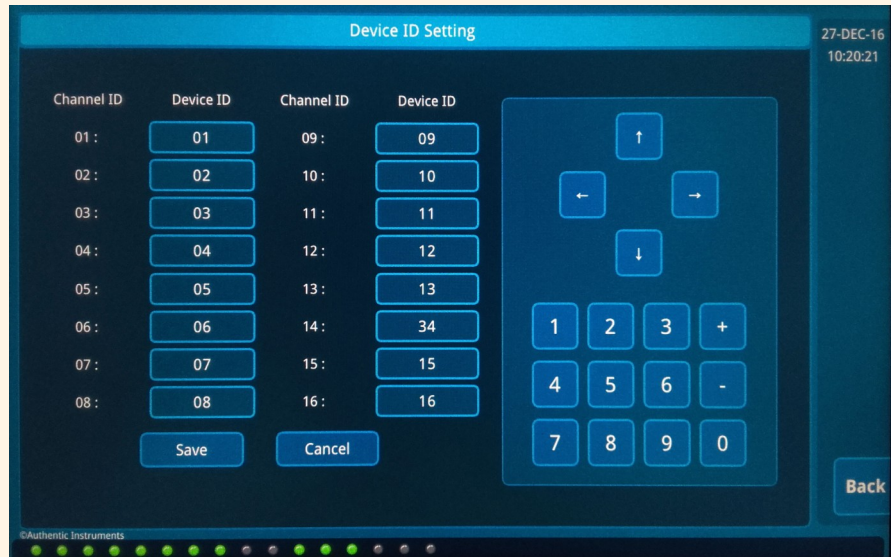
Manual e-mail can be sent anytime, the 3 recipients will receive the e-mail immediately.



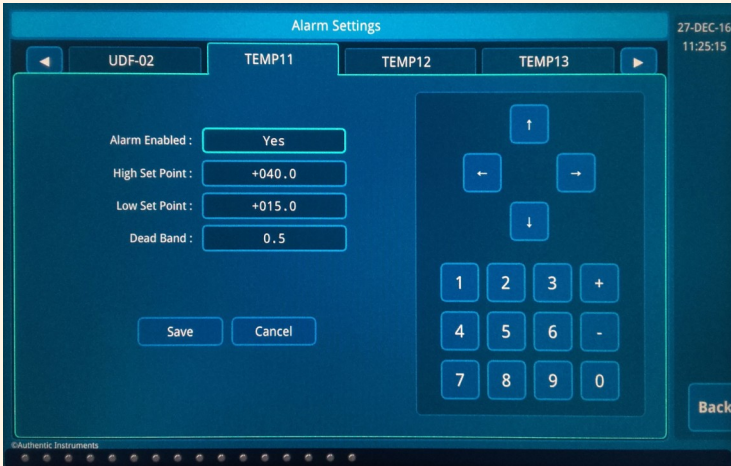


Password protected so that no unauthorized user alters the settings

Device ID settings set according to their transmitters automatically.

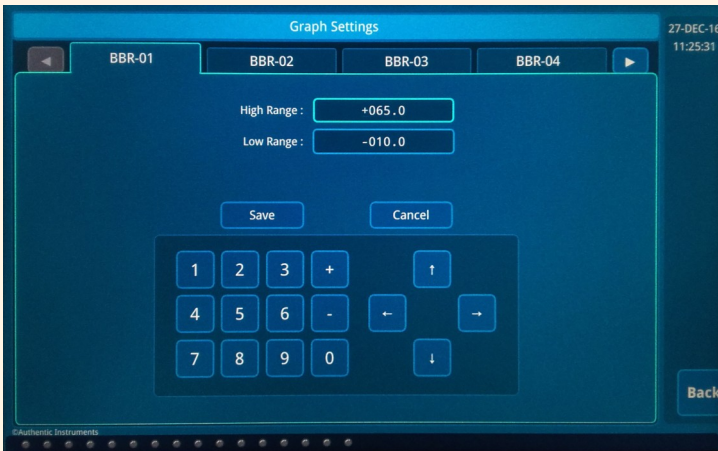
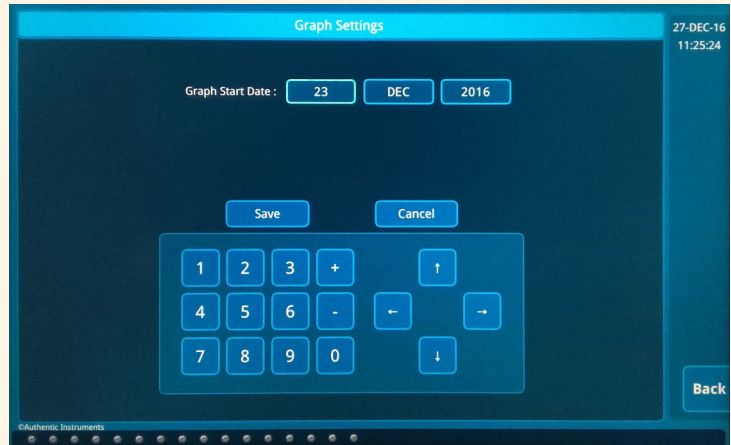


Channel Name to set the equipment's name that will be displayed on Central Monitoring System.



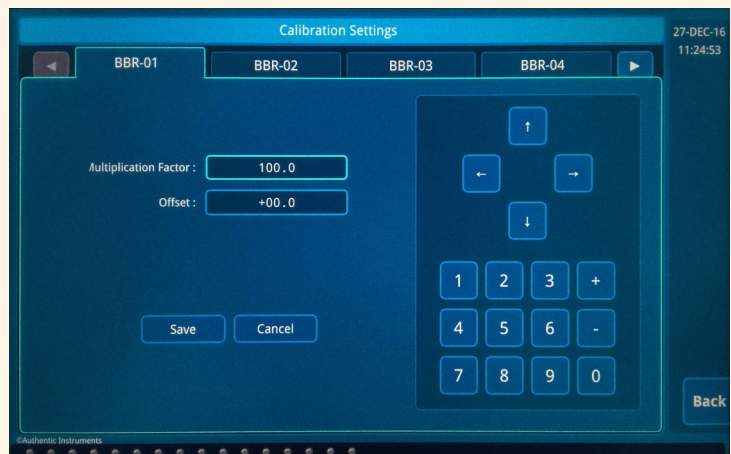
Alarm settings to set the temperature beyond which the alarm will sound.

Graph start date setting to set the date of graph starting.



Graph Settings to set the higher and lower limit of the graph.

Calibration settings to calibrate each equipment individually.





Authentic Instrument Industries Ltd.

(Formally known as “Authentic Instrument & Automation (P) Ltd.”)

Head Office :	31, RIICO Industrial Area, Jhotwada, Kamani Chouraha, Jaipur – 302012, Rajasthan, India.
Branch Offices :	at Delhi, Kanpur, Lucknow, Mumbai, Raipur, Chennai, Kolkata, Patna, Jabalpur, Bhopal, Bhubaneswar, Hyderabad.
Mobile :	+91-9314529100, +91-9694019100, 9352454200-300
e-mail :	support@authenticinstruments.com / calibration@authenticinstruments.com / service@authenticinstruments.com
Website :	www.authenticinstruments.com



Scan this QR Code to visit our Website