

Digital Temperature Display

7.1" Touch Screen Display for viewing the temperature, alarms and previous week records.

USB drive support

So that you could download the digital paperless, inkless circular charts to your computer in non-editable jpeg format.

Miniature Circuit Breaker

It cuts off the power to the equipment in case of voltage peaks to protect inner circuitry.

Forced-air Cooling

Equipped with an optimized air guide concept. This reduces the physically induced temperature drop and enables an almost constant temperature throughout the body.

Lifetime Comfortable Access

Full length handle for easy access from all heights.

Easy drawers

A total of 3 drawers are set on channels for easy access to blood bags.

Key locking system

High quality locks for locking the door from unauthorized access.

Low-noise Compressor

Relative noise level as low as 50 db.

Lockable Castor wheels

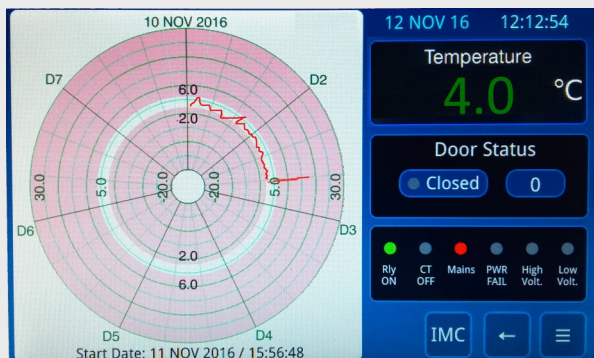
Heavy duty lockable Castor wheels for locking the equipment in place.

Ventilation Slits with pre-filters

Proper ventilation for the equipment to keep cool and dust elimination by pre filters which are removable and washable.



BBR-80



LCD Screen Display for Blood Storage Cabinets



Heavy-duty Level adjustment and Easy mobility lockable Castor Wheels

BBR-80

- **7.1" Touch screen** for monitoring and controlling the temperature of the equipment.
- **Inkless & paperless** smart chart recording system with 3 weeks chart storage capacity.
- **Digital circular chart** can be downloaded from the controller by using a pen drive*.
- **External Housing** made from galvanized sheet (rust proof) of 18 SWG, with grey, anti-scratch powder coating. Length of power cable, approx. 2 m.
- **Lockable Castor Wheels** to lock the equipment in place without moving.
- **Interior** made from 304 grade 22 SWG stainless steel.
- **Interior consists** of three drawers on channels with stop,
- **Capacity per drawer** approx. 27 blood bags, 500 ml each.
- **Door stop** on the right-hand side to stop the door from opening more than 100-110 degrees.
- **Forced air cooling** with axial blower, switches off automatically when you open the door, ensures a uniform temperature and minimizes temperature deviation.
- **Front door** double Vacuum packed toughened glass.
- **Warning function** with visual and audible alarm signal in the case of power failure, temperature deviations, voltage fluctuation, door left open (after 60 seconds).
- **Battery backup^** for up to 36 hours for temperature and chart recording system.
- **Central Monitoring System** compatible so that temperatures from all the equipment could be seen at one place.
- **Ventilation-enforced refrigerating machine**, vibration free, hermetically sealed, energy saving, low noise, easy to service. Inlet air and exhaust air flow through the ventilation slits at the front and the back.
- **Low-noise compressor** reduces noise to a negligible range.

Specification

Capacity	80 bags
Temperature Setting	+4°C
Voltage	220 - 240 V, 50Hz
Overall Dimensions	24" x 28" x 54" (inches)
Interior Dimensions	17" x 21" x 28" (inches)
Starting/Running Current	3 A / 2 A
Ground Clearance	90 mm
Cool Down time (at full load)	3 hours
Hold Over time (at full load)	2 hours
Temperature Gradient [#]	±1°C
Product Catalog	AIL-10101

* Supported capacity for pen drive is capped at 4 GB.

[#] It is the maximum temperature difference between different parts of interior.

[^] Battery backup is not provided for the equipment.

This picture is for visual purpose only, actual colours may vary.

Highlights

- **Automatically** mails the digital circular chart at 3 e-mail IDs every weekend and can mail any time by using Manual Mail function.
- In case of fault occurrence, a SMS is sent to a primary number, then he has to acknowledge the fault by using Acknowledge function, if he doesn't acknowledge the fault then a SMS is sent to a higher authority.
- **GSM Module** for alarm text message and e-mail forwarding about all the faults.
- **Port for Central Monitoring System** for viewing the temperatures of all the blood bank equipments at same place on 10.3" Touch Screen industrial computer.

Declaration for Design, Installation, Operation, Performance and Maintenance Qualification**Technical Parameter Specification**

Sr Nos	Particulars	Minimum Requirement / Standard.	Declared
1	Temperature Indicator	4.0°C	4.0°C
2	Temperature Recorder	4.1°C	4.1°C
3	Gradient Temp. in Chamber	≤2°C	≤1°C
4	Door Alarm:- Alarming after 5 min. of gate opening	5 minute	2 minute
5	Weekly Circular temperature chart recording.	1 week	Weekly with Previous 2 Week Storage.
6	Paperless/inkless/traditional/Smart electronic weekly circular temperature chart recorder	traditional	Smart electronic weekly circular temperature chart recorder
7	Low Temp. Alarm:-Alarming after 2°C with delay of 2 min.	2-5 minute	2 minute
8	High Temp. Alarm:-Alarming after 6°C with delay of 2 min.	2-5 minute	2 minute
9	front glass double toughened	Found	Found
10	Surface Temperature of body at +4°C inside temp after 48 hrs.	Equal to ambient Temp.	Equal to ambient Temp.
11	Frosting at gate.	Should Never Seen	Never Seen
12	Moisture at door	Should Never Seen	Never Seen
13	Cool down time (Full load of blood packet at +25 °C to +4 °C) at +43 °C ambient temperature.	6 hours	2 hours
14	Hold over time (Full load of blood packet at +4 °C to more than +6 °C) at 25 °C	2 hours	2 hours
15	Blood Packets Carrying Capacity	80 Bags	80 Bags
16	ON/OFF Cycle (compressor) suitability	70 : 30	60 : 40

Electrical Safety

	Particulars	Minimum Requirement / Standard.	Declared
17	Mains Voltage: Live to Neutral	240 V AC	240 V AC
18	Mains Voltage: Live to Earth	240 V AC	240 V AC
19	Mains Voltage: Neutral to Earth	Max. 5 V AC	Max. 5 V AC
20	Equipment Current	Max 5 Amp.	Max 3 Amp.
21	Power plug unbreakable with Line	Line	Line
22	Leakage Earth	5 V AC Max.	5 V AC Max.
23	Noise level test	Less than 55 dB	Less than 52 dB
24	Starting amp.	Max. 5.0 Amp.	Max 3 Amp.
25	Running amp.	2-4 Amp.	2 – 3 Amp.
26	Power Failure Alarm	Available	Available
27	High Voltage Indicator	Available	Available
28	Low Voltage Indicator	Available	Available

PRE INSTALLATION ELECTRICAL REQUIRMENTS FOR SMOOTH WORKING

VOLTAGE -220-240 V AC ,STABILITY- ±5 V AC, VOLTAGE DROP DURING STARTING 10 V AC MAX

29	Mains Voltage: Live to Neutral	220-240 V AC FOR NEUTRAL	220-240 V AC For Neutral
30	Mains Voltage: Live to Earth	220-240 V AC FOR EARTHING	220-240 V AC For Earthing
31	Mains Voltage: Neutral to Earth	0.5 TO 5 V AC FOR EARTHING	0.5 TO 5 V AC For Earthing

Blood Storage Cabinet

Declaration for Design (DQ), Installation (IQ), Operation (OQ), Performance (PQ) and Maintenance Qualification (MQ)

Requirement of Drug Act.

✓

PRE INSTALLATION ELECTRICAL REQUIRMENTS FOR SMOOTH WORKING

Sr. Nos	Particulars	Min. Requirement / Std.	Observed	(DQ)	(IQ)	(OQ)	(PQ)	(MQ)
1.	Mains Voltage: Live to Neutral	220-240 V AC FOR NEUTRAL	220-240 V AC For NEUTRAL	✓	✓			✓
2.	Mains Voltage: Live to Earth	220-240 V AC FOR EARTHING	220-240 V AC For EARTHING	✓	✓			✓
3.	Mains Voltage: Neutral to Earth	0.5 TO 5 V AC FOR EARTHING	0.5 TO 5 V AC For Earthing	✓	✓			✓

Electrical Safety Requirements

4.	Equipment Current	Max 5 Amp.	Max 3.5 Amp.	✓		✓	✓	✓
5.	Power plug unbreakable with Line	Line	Line	✓	✓			✓
6.	Leakage Earth	5 V AC Max.	5 V AC Max.	✓	✓		✓	✓
7.	Noise level test	Less than 55 dB	Less than 52 dB	✓	✓	✓	✓	✓
8.	Starting amp.	Max. 5.0 Amp.	Max 3.5 Amp.	✓		✓	✓	✓
9.	Running amp.	2-4 Amp.	1.5 – 2.5 Amp.	✓		✓	✓	✓
10.	Power Failure Alarm	Available	Available	✓	✓	✓	✓	✓
11.	High Voltage Indicator	Available	Available	✓		✓	✓	✓
12.	Low Voltage Indicator	Available	Available	✓		✓	✓	✓

Technical Requirements

	Temperature Indicator	4.0°C	4.0°C	✓	✓	✓	✓	✓
	Temperature Recorder	4.1°C	4.1°C	✓	✓	✓	✓	✓
	Gradient Temp. in Chamber	≤2°C	≤1°C	✓		✓	✓	✓
	Door Alarm:- Alarming after 5 min. of gate opening	5 minute	2 minute	✓	✓	✓	✓	✓
	Weekly Circular temperature chart recording.	1 week	Weekly with Previous 2 Week Storage.	✓			✓	✓
	Paperless/inkless/traditional/Smart electronic weekly circular temperature chart recorder	traditional	7.1" Touch Screen	✓	✓		✓	✓

Sr. Nos	Particulars	Min. Requirement / Std.	Observed	(DQ)	(IQ)	(OQ)	(PQ)	(MQ)
	Low Temp. Alarm:-Alarming after 2°C with delay of 2 min.	2-5 minute	2 minute	✓		✓		✓
	High Temp. Alarm:-Alarming after 6°C with delay of 2 min.	2-5 minute	2 minute	✓	✓	✓		✓
	Front glass double toughened	Found	Found	✓	✓			
	Surface Temperature of body at +4°C inside temp after 48 hrs.	Equal to ambient Temp.	Equal to ambient Temp.	✓		✓	✓	
	Frosting at gate.	Should Never Seen	Never Seen	✓		✓	✓	✓
	Moisture at door	Should Never Seen	Never Seen	✓	✓	✓	✓	✓
	Cool down time (Full load of blood packet at +25 °C to +4 °C) at +43 °C ambient temperature.	8 hours	4 hours	✓		✓	✓	✓
	Hold over time (Full load of blood packet at +4 °C to more than +6 °C) at 25 °C	2 hours	3 hours	✓		✓	✓	✓
	Blood Packets Carrying Capacity	80 Bags	80 Bags	✓	✓	✓		
	ON/OFF Cycle (compressor) suitability	70 : 30	60 : 40	✓		✓	✓	✓
	Effectiveness of Cooling unit (Heat Exchanger)	60 %	70 %	✓		✓	✓	✓